

Let's talk

SKF Marine

Hermann-Blohm-Str. 5 · 20457 Hamburg
yacht.marine@skf.com · skf-marine.com

It's all about balance

Yacht stabilizers by SKF Marine



Who we are and what we love to do

SKF Marine is part of the SKF Group. With more than 450 employees and a turnover of around 110 million euros, we are a highly respected system and services engineering partner for designers, builders, operators and system suppliers in the maritime industry.

If you are looking for a specialist in marine yachting to deliver unique solutions for your needs, you have found the right partner. Specialized engineering teams focus on our clients' needs to deliver quality solutions and services worldwide.

Stabilizing the maritime business since 1961

- > 1877 foundation of Blohm + Voss as shipyard and machine factory
- > 1961 installation of the first fin stabilizer
- > 2013 SKF acquires Blohm + Voss Industries
- > 2015 renamed to "SKF Marine"

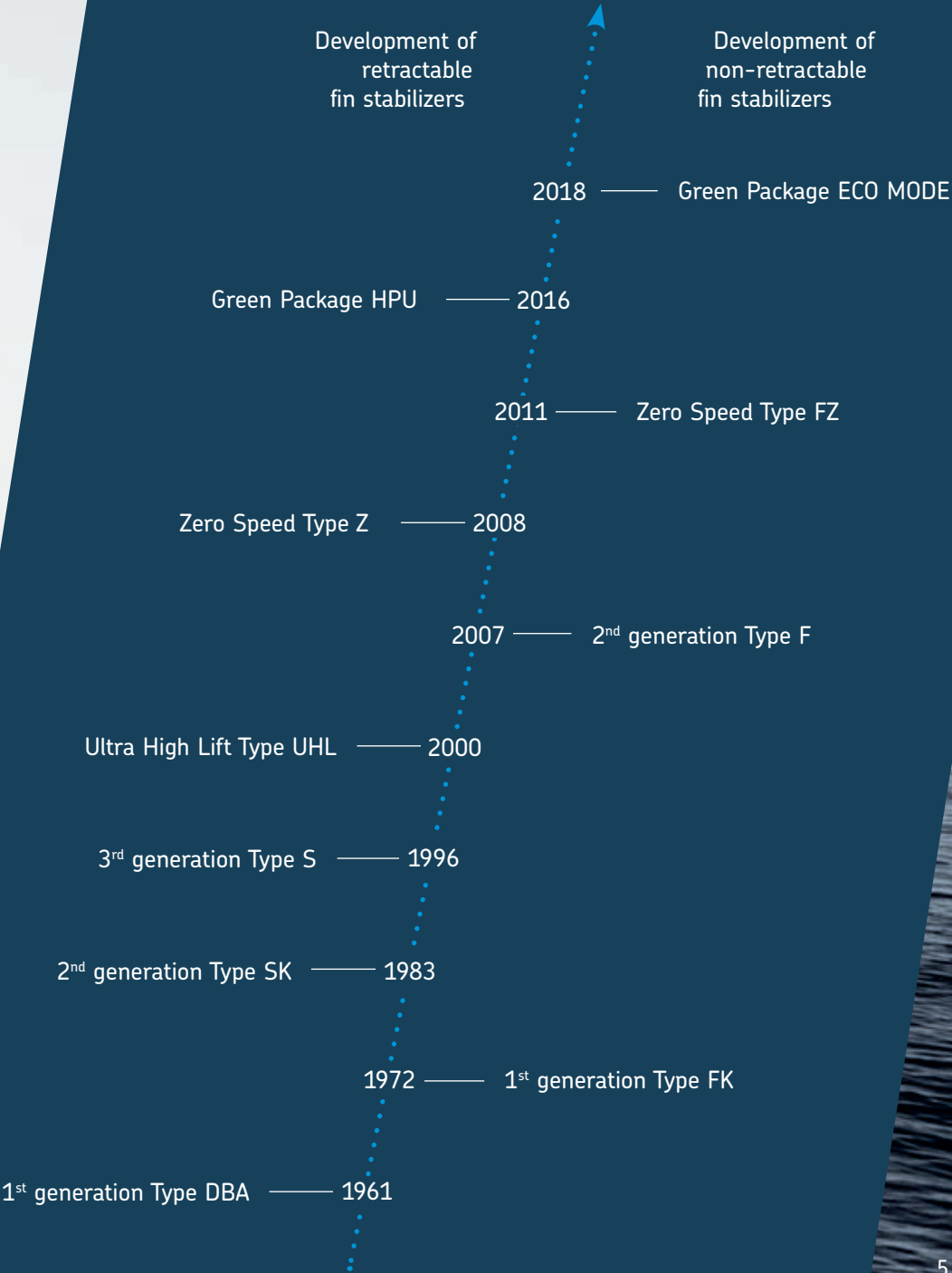
Comfort and safety in balance

Rolling is one of the most inconvenient motions among all other motions at sea. SKF stabilizers are suitable for all kinds of yachts and achieve the highest degree of efficiency in stabilization performance for superior comfort at zero speed and underway even in rough seas.

We have a long history in highly effective stabilization solutions for newbuildings and retrofits. These are protected by international patents and ensure a smooth and safe voyage.

Established innovation driver

A dedicated research and development team is responsible for the continous improvement of effective next-level fin stabilizers. We remain in close contact with our customers and their specific needs and challenges to guarantee that new market and environmental requirements can be rapidly realized.



Our mission

Design and develop

Engineering services to enable new design and minimized lifetime costs

Manufacture and test

A one-stop source for proven, world-class products, delivered and available worldwide



"Provide our customers with solutions that minimize the operational costs throughout the ship life cycle by improving energy efficiency, asset availability as well as health, safety and environmental (HSE) performance."

Maintain and repair

A range of maintenance engineering and consulting services to boost asset uptime

Operate and monitor

Safer and more profitable operations with increased availability through class-approved solutions for condition-based maintenance

Our maritime portfolio for super yachts

Stabilizers

We have been manufacturing fin stabilizers for ships all over the world since 1961. More than 600 ships are currently under way on the seven seas with their retractable and non-retractable fin stabilizers.

Rotary vane steering gear

Our rotary vane steering gear can be used for any rudder design and is the optimum solution for all kinds of vessels.

Simplex shaft components

As a specialized provider of shaft components, including oil-lubricated and water-lubricated sterntube seals, intermediate shaft bearings, thrust bearings as well as complete sterntube solutions and accessories, we have set the standard in the market for decades.

Turbulo bilge water separators

Today, the reliability of oily water separators is in the focus of public interest. The two-stage Turbulo Mechanical Phase Breaker (TMPB) benefits from 80 years of experience with the Turbulo Oily water separator and, of course, meets the requirements of IMO Resolution MEPC.107(49).

Couplings

SKF OK shaft and flange couplings, SKF Supergrip bolts and marine hydraulic nuts are based on the SKF oil-injection method. All precision-made solutions enable easy and efficient mounting and dismantling of heavy marine components, resulting in more uptime.

SKF Cooper split bearings are simple to install, inspect or remove. The standard product can incorporate a range of customised features to suit individual requirements and specifications.

The split bearings will give you a far greater design flexibility, quick and easy maintenance – crucial, when you're a long way from harbour – and less downtime, which results in major savings.

Open up new possibilities

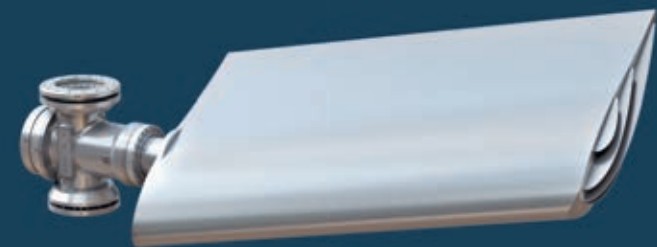
Balance makes the difference

Less rolling means more wellbeing and more options to do things the way you want to do. Increasing the balance of your yacht in zero speed and underway has never been so convenient. No sea-sickness, more safety and unique comfort. Effectively reduce rolling with SKF stabilizers.

Let convenience surround you

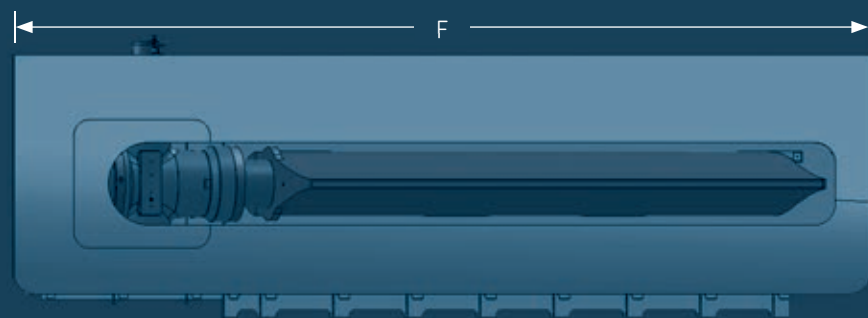
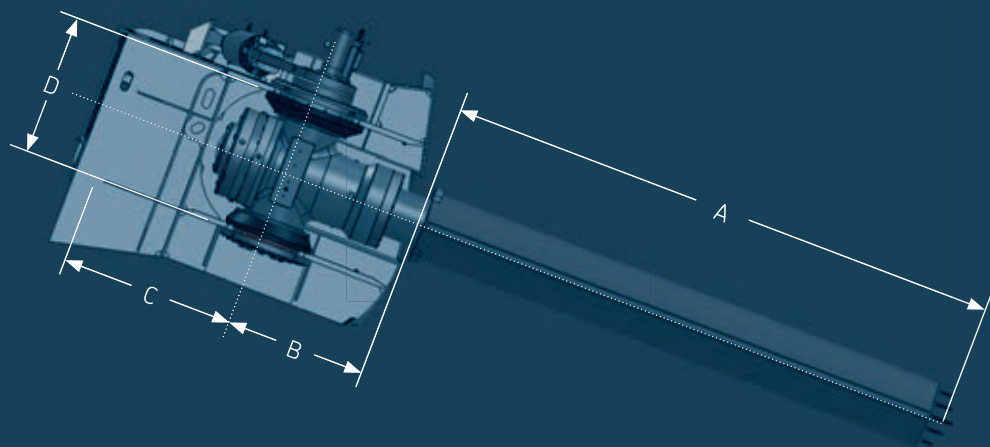
Retractable Fin Stabilizer Type Z

The retractable SKF Stabilizer Type Z is designed with a single-piece fin that provides great at-anchor stabilization and underway performance for yachts of all sizes. Due to the patented, swept design, the fin can be housed completely inside the hull without any protrusion. It is designed as plug and play solution.



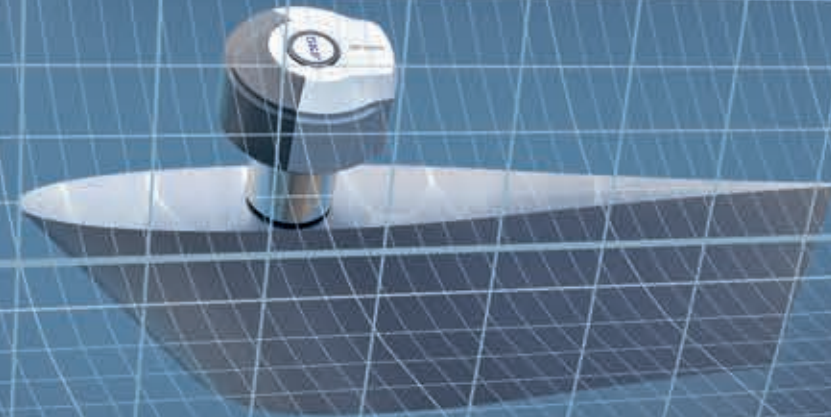
Technical specification Type Z

- > 120° constant high torque rotary vane actuator
- > single-piece fin for optimal performance both at zero speed and underway
- > patented, swept design allowing the fin to be housed completely inside the hull without any protrusion
- > forged high-strength shaft with a precision SKF bearing system
- > robust crux with VGP-compliant sealing system
- > efficient and silent hydraulic power pack
- > user-friendly electronic control unit with multiple touch panels and modern graphic user interfaces
- > a high-quality fin box individually designed for each yacht



Type	Z100	Z200	Z300	Z400	Z500	Z600
Fin Area m ² up to	4.00	7.00	9.00	13.00	16.00	19.00
A (mm)	3 500	3 970	4 150	5 000	5 570	6 100
B (mm)	600	770	950	990	1 400	1 650
C (mm)	500	530	580	690	800	1 000
D (mm)	780	930	950	1 220	1 400	1 540
F _{min}	5 400	5 950	6 200	7 200	8 500	9 600

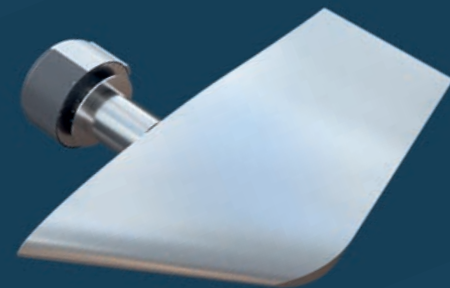
Enjoy the voyage



Non-retractable Fin Stabilizer Type FZ

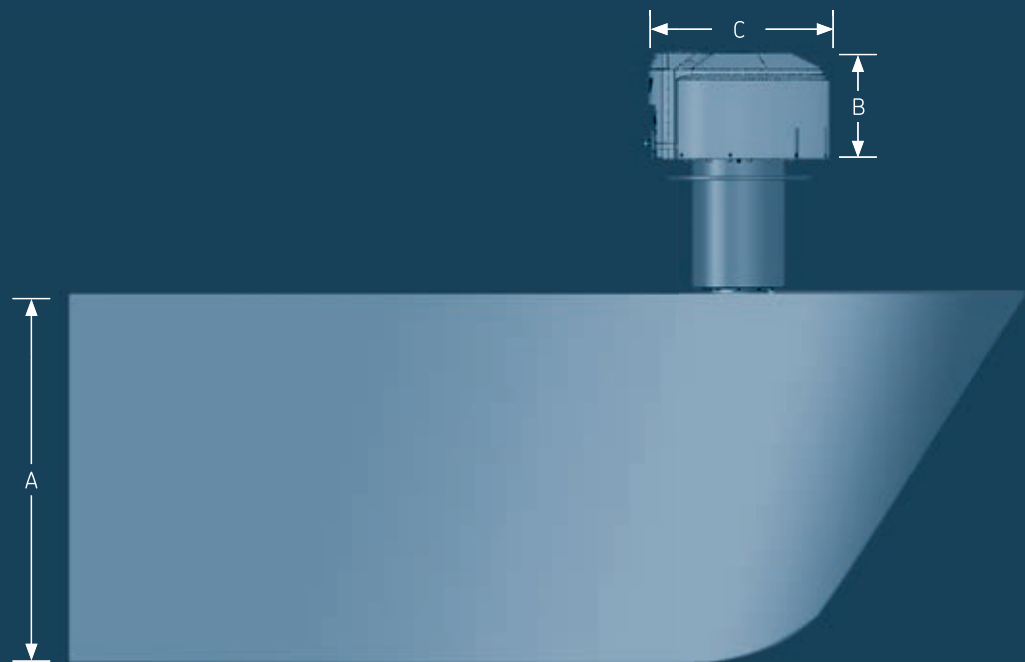
The non-retractable SKF Stabilizer Type FZ is a very compact and powerful solution with a single-piece fin for at-anchor stabilization, whilst also enabling underway performance, independent of the yacht's size.





Technical specification Type FZ

- > 120° constant high torque rotary vane actuator
- > single-piece fin for optimal performance both at zero speed and underway
- > forged high-strength shaft with a precision SKF bearing system
- > VGP-compliant sealing system
- > efficient and silent hydraulic power pack
- > user-friendly electronic control unit with multiple touch panels and modern graphic user interfaces
- > easy to integrate mounting tube



Type	FZ200	FZ300	FZ400	FZ500	FZ600
Fin Area m ² *	5.4	6.4	7.9	10.0	12.1
A (mm)	1 400	1 500	1 700	1 900	2 100
B (mm)	505	545	580	610	670
C (mm)	840	870	980	1 040	1 280

* Valid for standard aspect ratio custom fins with different fin areas and aspect ratios possible.

Level up your yacht stabilizer performance

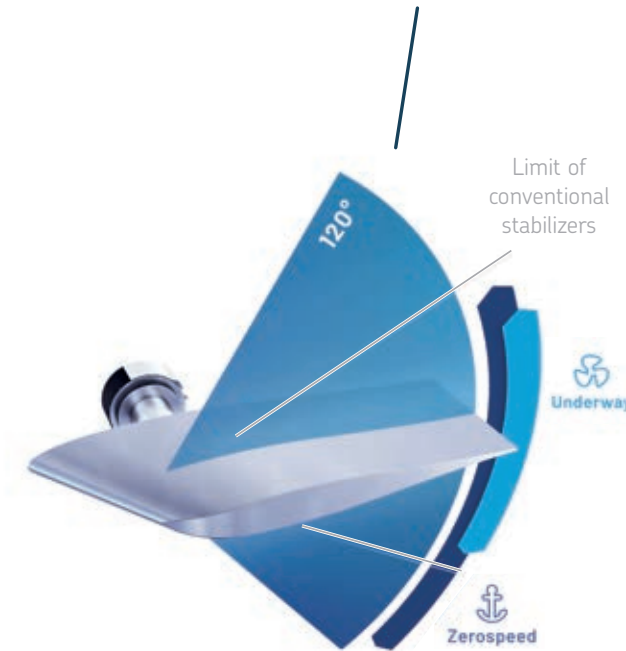
SKF's stabilizer system provides you with a performance that cannot be achieved by any cylinder-driven stabilizer system.

Easy, safe and long-lasting with low maintenance

With SKF's 120° constant high torque rotary vane actuator, you achieve exceptionally high working angles of up to $\pm 60^\circ$ and more advantages.

- > freedom to operate the fins at the working angles that best match your yacht's needs and the operational conditions
- > constant maximum torque output at any point of the operating range
- > a very powerful system in a compact design for easy installation

Benefits of SKF's Rotary Vane Actuator



120° fin operation range

constant maximum torque output
at any point of operating range

compact design for minimized space



Rely on the unique, not the ordinary

We keep what others promise: consistent long-term and active stabilization performance.

Our stabilizers benefit from SKF Marine's long and successful history of designing and building rotary vane actuators for different marine applications. Therefore, first choice for highly reliable torque transmission is the rotary vane actuator.

- > fewer mechanical parts and very low maintenance requirements
- > 5-year service interval
- > high-precision bearing system from the market leader SKF
- > single-piece steel fin, optimized for underway and at-anchor operation

Our service – your benefits



We will remain at your side –
over the full lifetime of your yacht.

- > 5-year service interval
- > long-lasting and low-maintenance products
- > qualified emergency service available 24/7 worldwide
- > inspection and maintenance
- > comprehensive technical advice
- > extensive stock of spares
- > possibility of underwater repairs